

2025 - 2026

YEAR 4

KELLS LANE PRIMARY SCHOOL

Find your Remarkable



Senior Leadership Team



Find your Remarkable



Miss Smith

Assistant Headteacher

KS2 & English Lead



Miss Wilson

Deputy Headteacher



Mrs Swinbank

Headteacher



Mrs Cartwright

Assistant Headteacher

EY/KS1 & Maths Lead



Mrs Gray

SENCo

School Ethos & Values

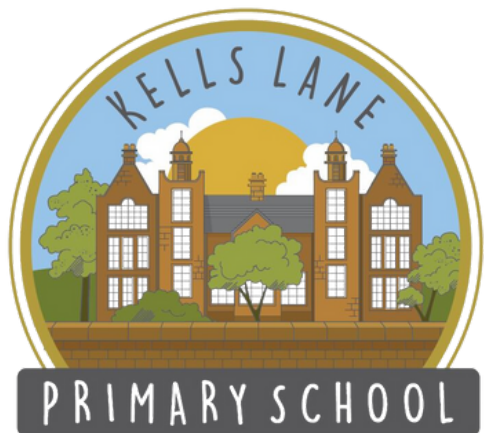
Brave 

Resilient 

Curious? 

Empowered 

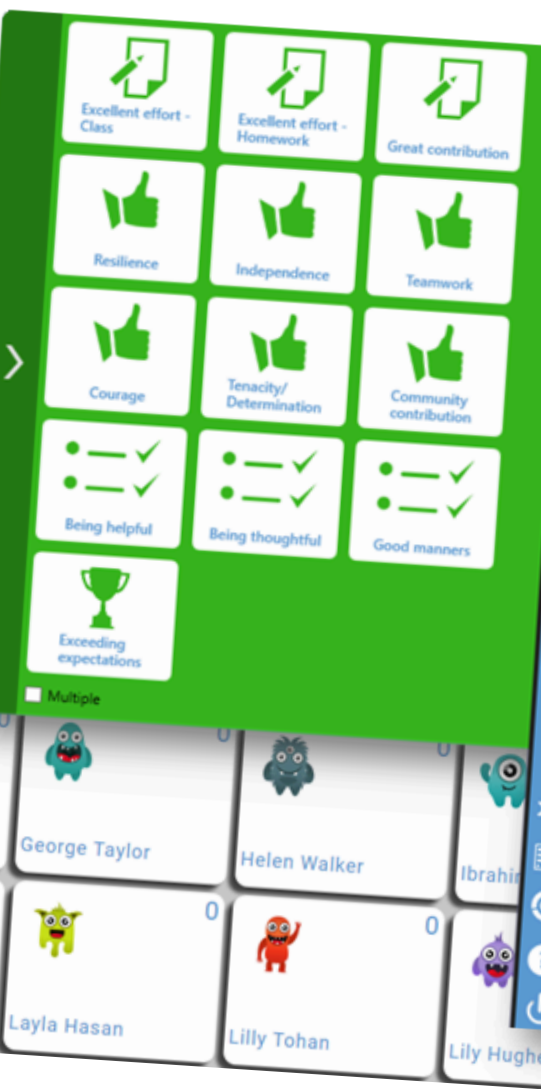
Ambitious 



Find your Remarkable 



Celebrating Effort



Find your Remarkable

THIS AWARD IS BEING PRESENTED TO

CONGRATULATIONS! YOU HAVE SHOWN A
REMARKABLE EFFORT TOWARDS YOUR LEARNING!

R Swinbank
MRS SWINBANK

M Wilson
MISS WILSON



Promoting the Fundamental British Values

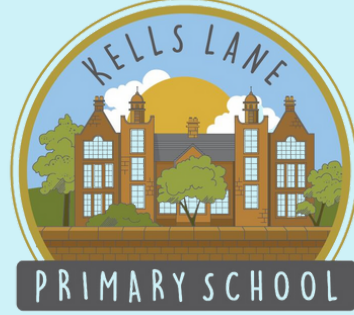


School ethos/rules
Embedded in our curriculum
Daily assemblies
SMART Schools Council



Children's rights are learned,
understood and lived
throughout our school

Mental Health & Wellbeing



Let's help every child

Big Oak room



Little Oak room



Mrs Thompson

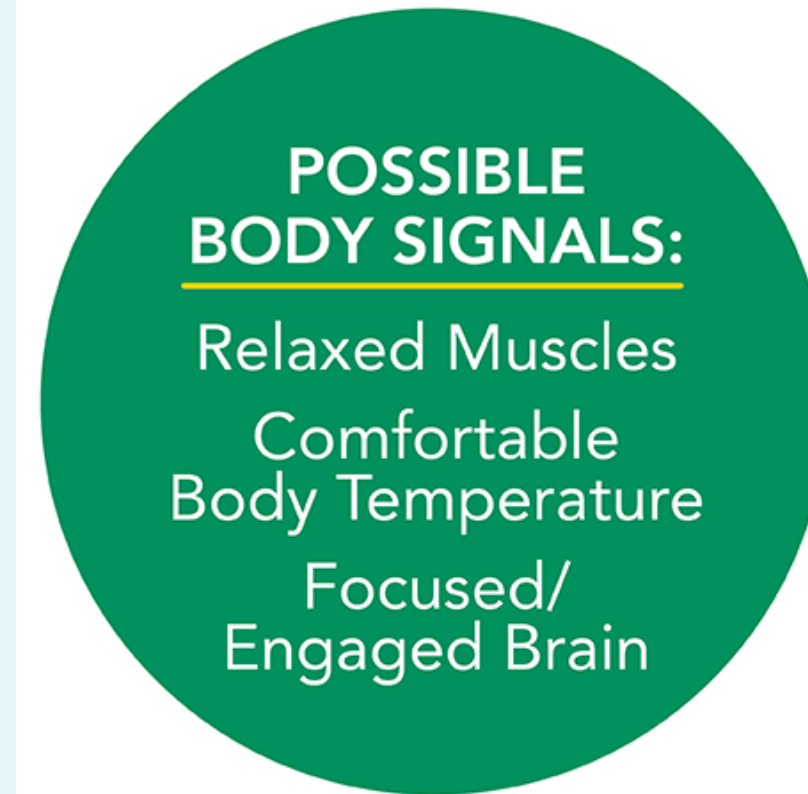
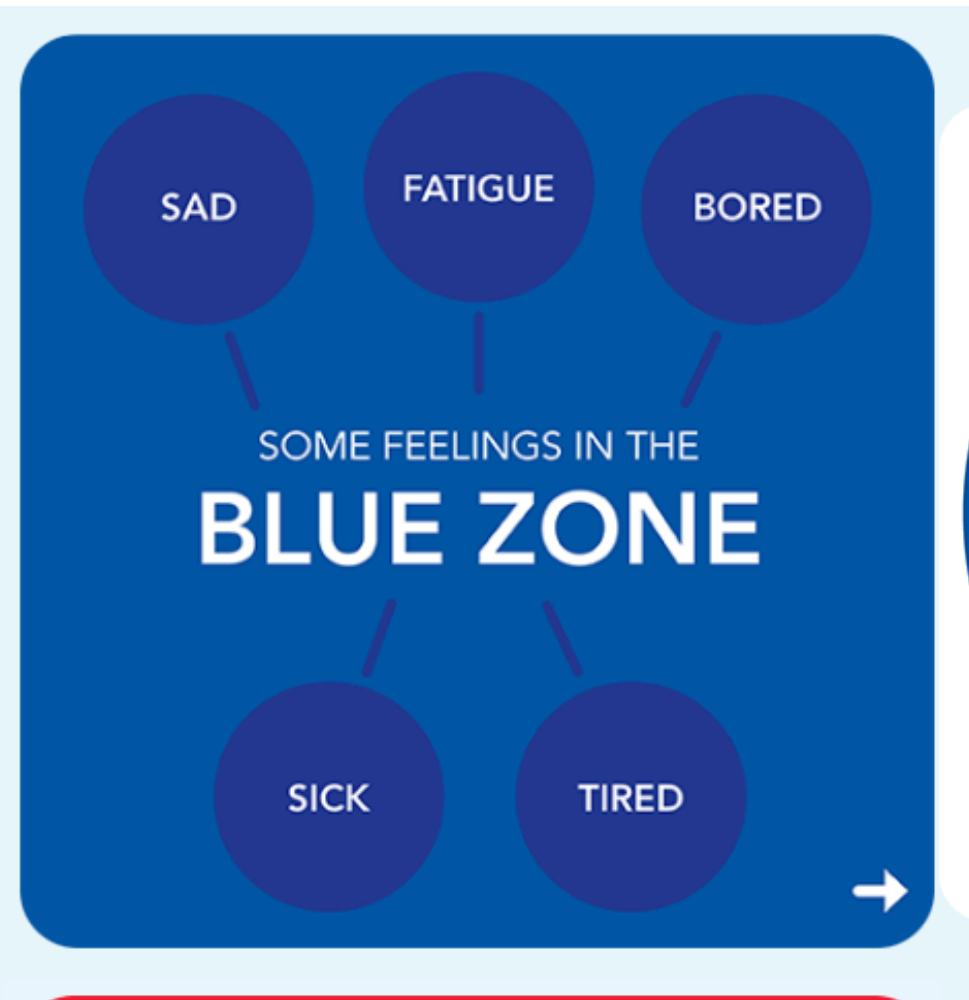


Empowering children to speak out to a trusted adult about anything that makes them feel sad, scared or worried.

Mrs Gray
SENCo



The **ZONES** of Regulation®



Learning Traits

Y4 ADVENTURERS 'Make it Happen!'

- Brave

Take responsibility, showing confidence in myself and my contribution to the group

- Risk-Taker

I am prepared to try things out even if they might not work



- Resilient

I can respond positively to change, seeking advice and support when needed

- Prepared

I can organise my time and resources, making sure I do the most important tasks first

'Learning Means the World'

Global curriculum is based on the 4Cs

Communication

Conflict

Culture

Conservation

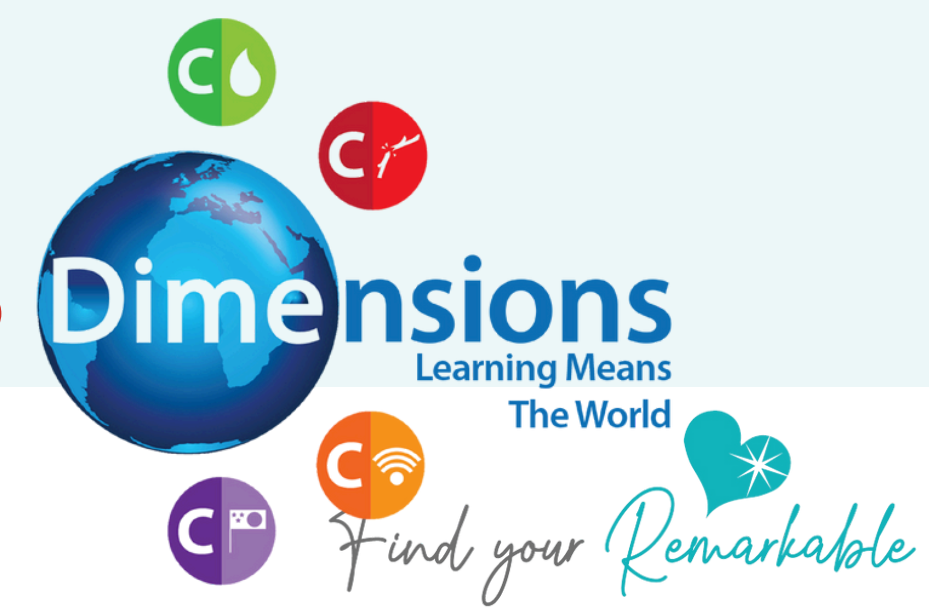
Curriculum
Drivers



Overarching
End Points



Curriculum - Autumn Themes



'Lightning Speed'

The World Wide Web
History & development of
the internet & WWW



Communication



'Law and Order'
Rules and Rights



Conflict



Curriculum - Spring Theme



'Cry Freedom'
Slavery Around the World



Curriculum - Summer Theme



Conservation

‘Picture Our Planet’

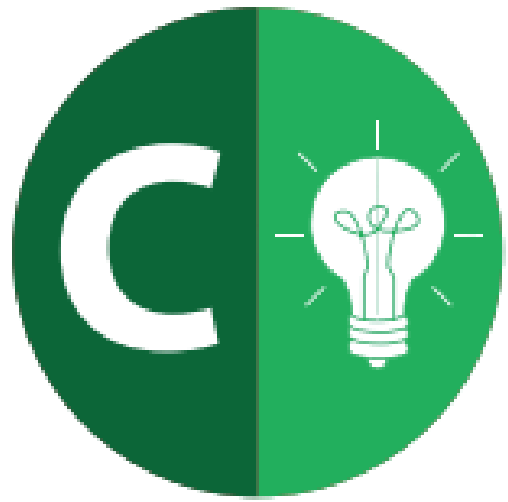
Brazil, Scotland and Italy

- Physical & human features
- Traditions & customs
- Conservation issues
- Make comparisons

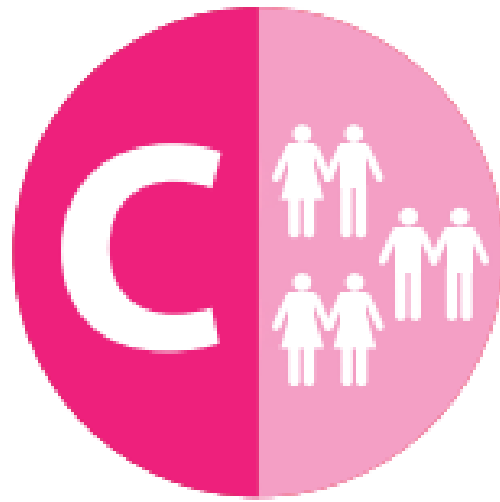


Remarkable People in History

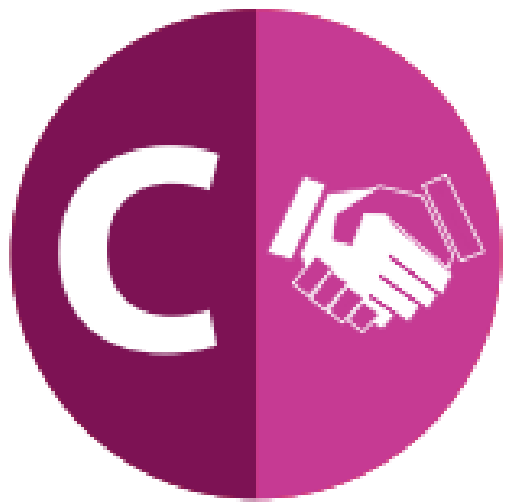
Find your Remarkable 



Creativity



Community



Commitment



Courage

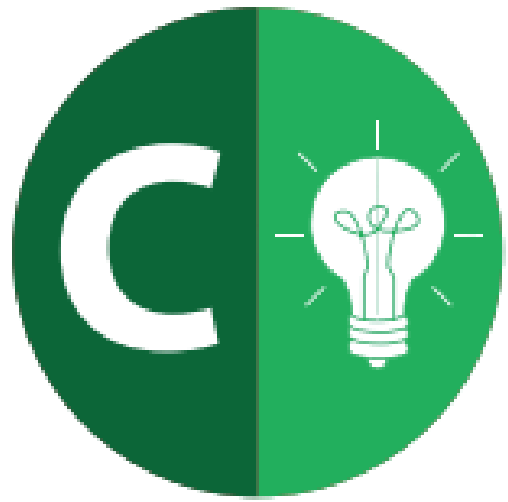


‘Viking Warrior’

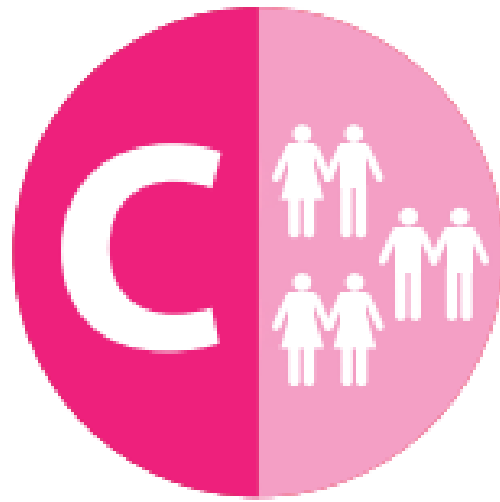
The Story of Ragnar Lothbrok
History of the Viking "Sea Lord"

Remarkable People in History

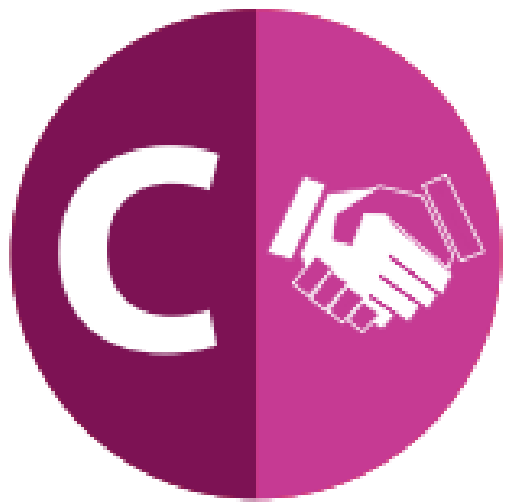
Find your Remarkable 



Creativity



Community



Commitment

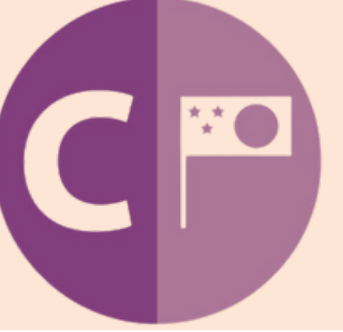


Courage



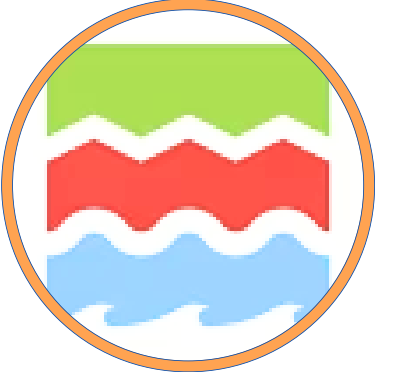
‘Saxon King’
The Story of Harold Godwinson
Last Anglo-Saxon king of England

Our Heritage



Sense of identify and pride.

It is important to learn and **celebrate our heritage** and be curious together.



Historic England



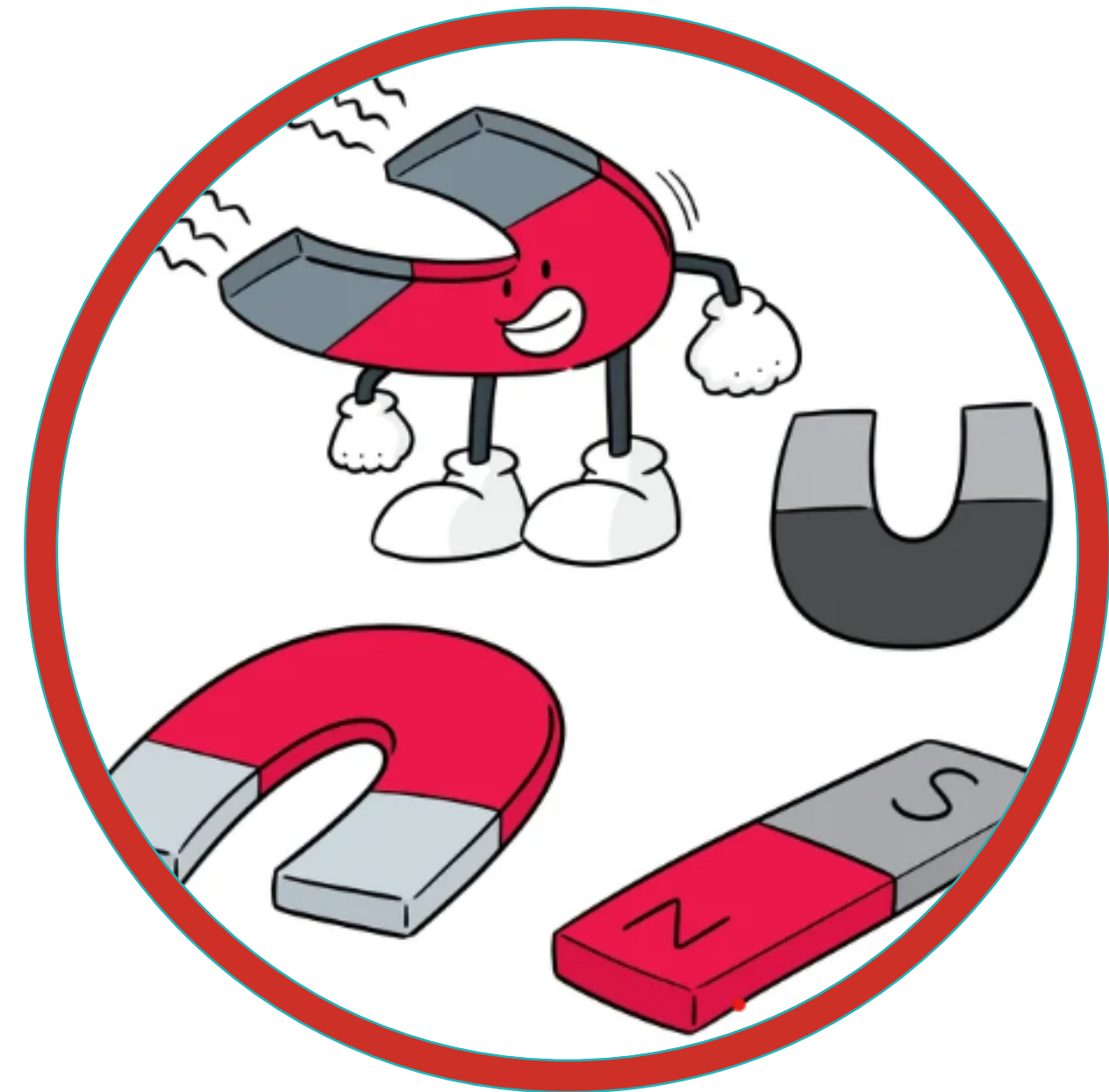
Find your Remarkable

Science In-Depth Unit

Find your  Remarkable

‘May the Force Be With You!’

- Magnets
- Poles
- Repel & Attract



Geography In-Depth Unit

Find your Remarkable 

‘Window on the World’

Settlements and Trade

- Human geography
- Trade links (food)
- Environmental problems



RE Curriculum

Find your Remarkable

Visit Newcastle
Reform Synagogue

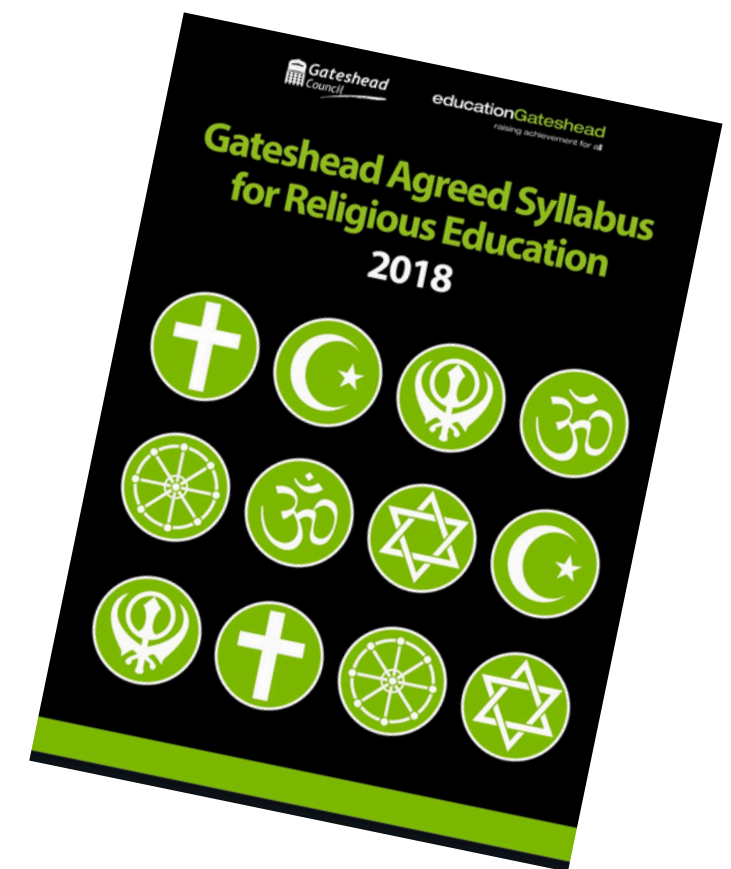


Judaism-Themes:

- Beliefs and Practices
- Passover
- Rites of Passage

Christianity- Themes:

- Christmas
- Easter
- Prayer & Worship



Our RE curriculum is based on the expectations of Gateshead Agreed Syllabus

The ARTS



Play in a Rock band

**Shakespeare Week
March**

**ROCK
STEADY™**

**Continue to play the
ukulele: Mr Dunn**



**Made in the
North East Week**

Learn to play the violin
Mr Lee



15-17th June

2 nights/ 3 days

robin wood
we make
a really positive
DIFFERENCE
developing children



WOW!

Barhaugh Hall, Alston, Cumbria



Suggested timetable

Barhaugh Hall Summer Timetable

Please note that timings for arrivals, departures, activities and showers are for guidance purposes only and may vary

Day One

Arrive 11.30	Lunch 12.20-12.50	Raft Building 1.40-2.50	Shower 3.00-3.20	Quest 3.30-4.50	Evening Meal 5.00-6.00	Canoeing 6.10-7.20	Caving 7.30-8.40
-----------------	----------------------	----------------------------	---------------------	--------------------	---------------------------	-----------------------	---------------------

Day Two

Breakfast 8.20-8.50	Giant Swing 9.00-10.10	Piranha Pool 10.20-11.10	Shower 11.10-11.30	Archery 11.40-12.50	Lunch 1.00-2.10	Climbing 2.20-3.20	Challenge Course 3.30-4.40	Crate Challenge 4.50-6.00	Evening Meal 6.10-7.10	Team Challenge 7.20-8.30
------------------------	---------------------------	-----------------------------	-----------------------	------------------------	--------------------	-----------------------	-------------------------------	------------------------------	---------------------------	-----------------------------

Day Three

Breakfast 7.40-8.10	Trapeze 8.50-10.00	Nightline 10.10-11.10	Zip Wire 11.20-12.20	Lunch 12.30-1.00	Depart 2.50
------------------------	-----------------------	--------------------------	-------------------------	---------------------	----------------

 Outdoor Activities  Indoor Activities  Outdoor Water Activities  Shower Times  Meal Times

Sports & PE

Aut 1- Wednesday pm



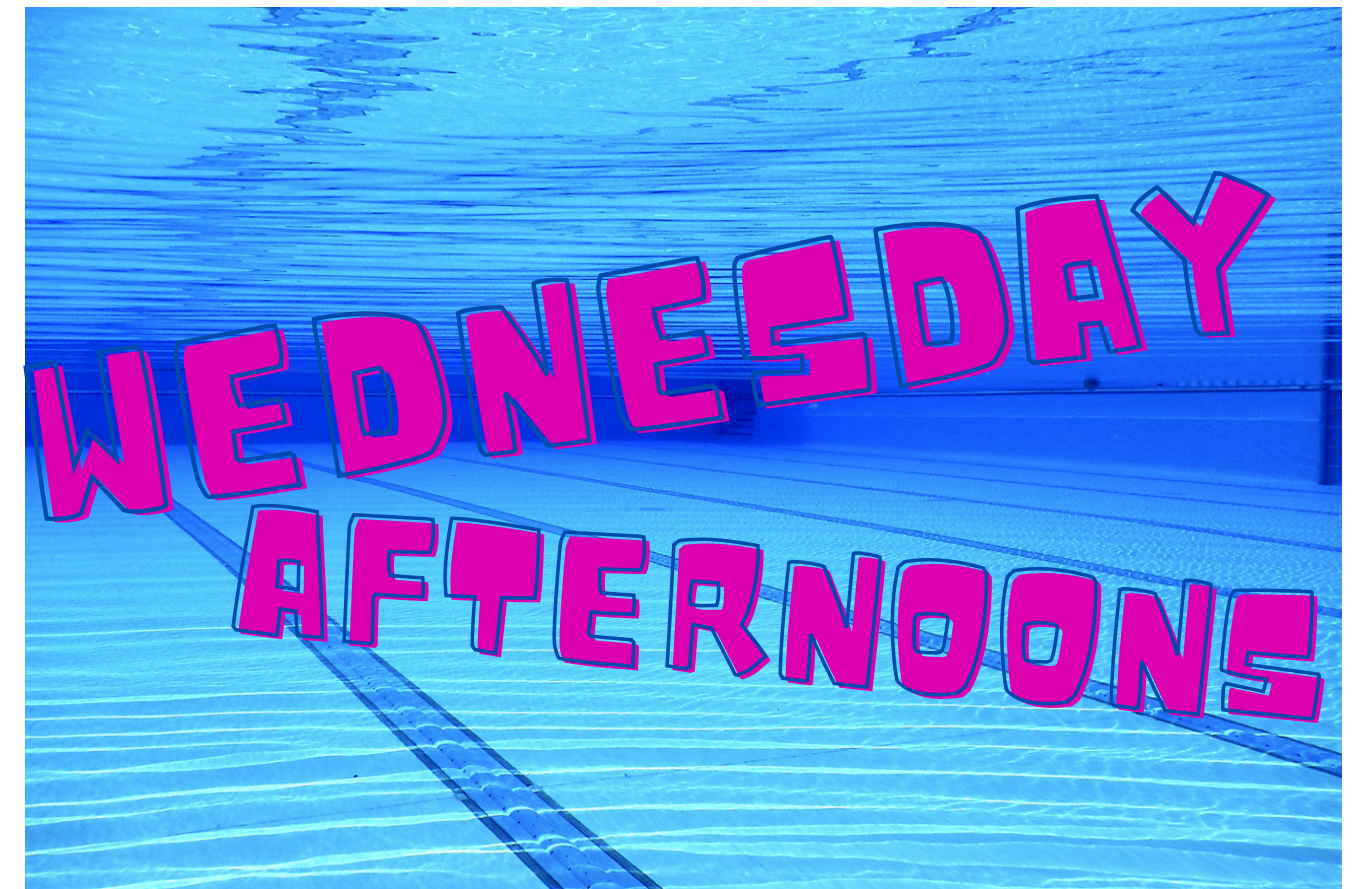
Swimming

Find your Remarkable 

Swimming @ Heworth Leisure Centre

Session is 2.30pm- 3:15pm

Approx return to school 3.45pm



Once a fortnight

More information will be
provided via the office...

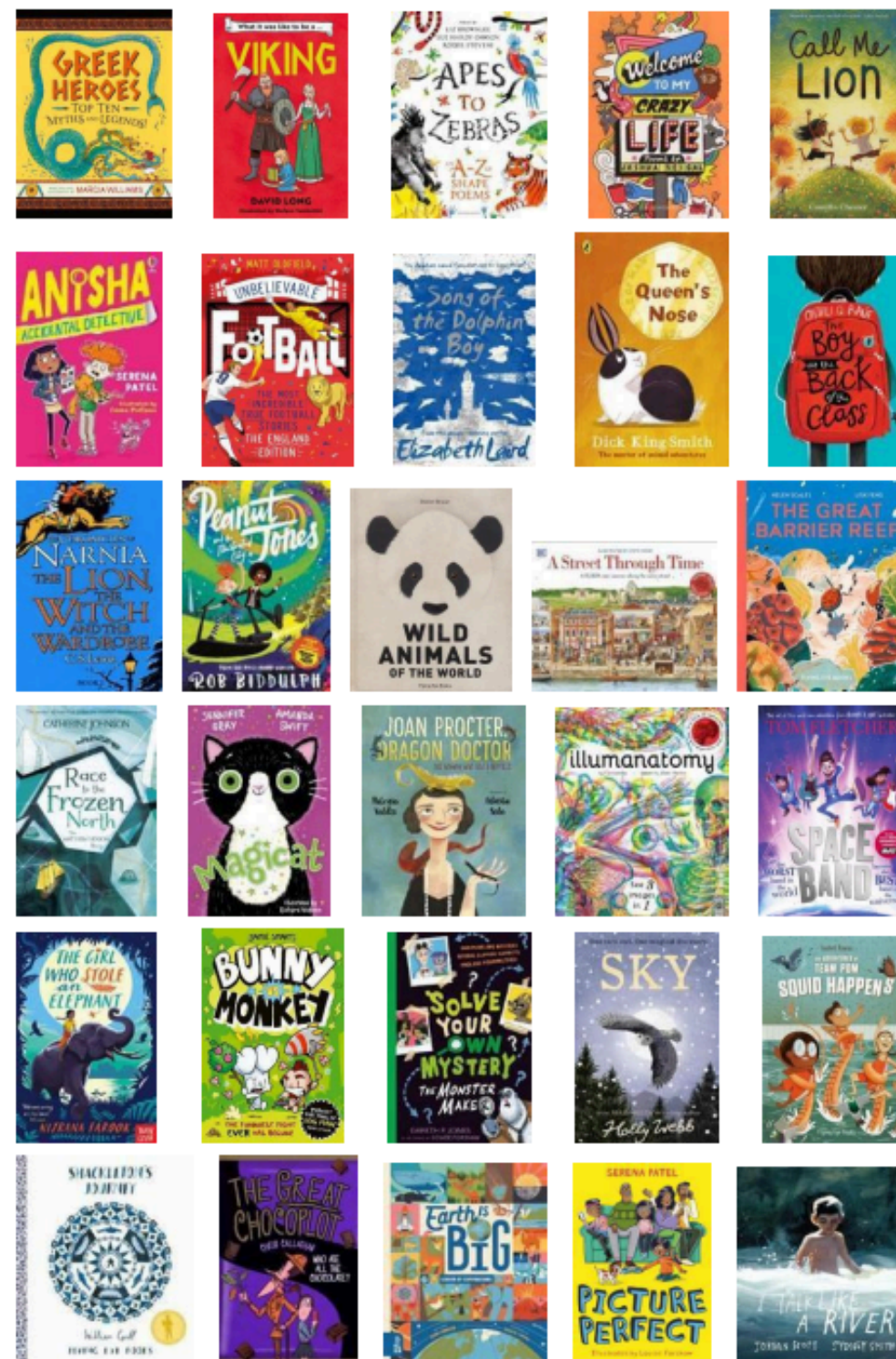
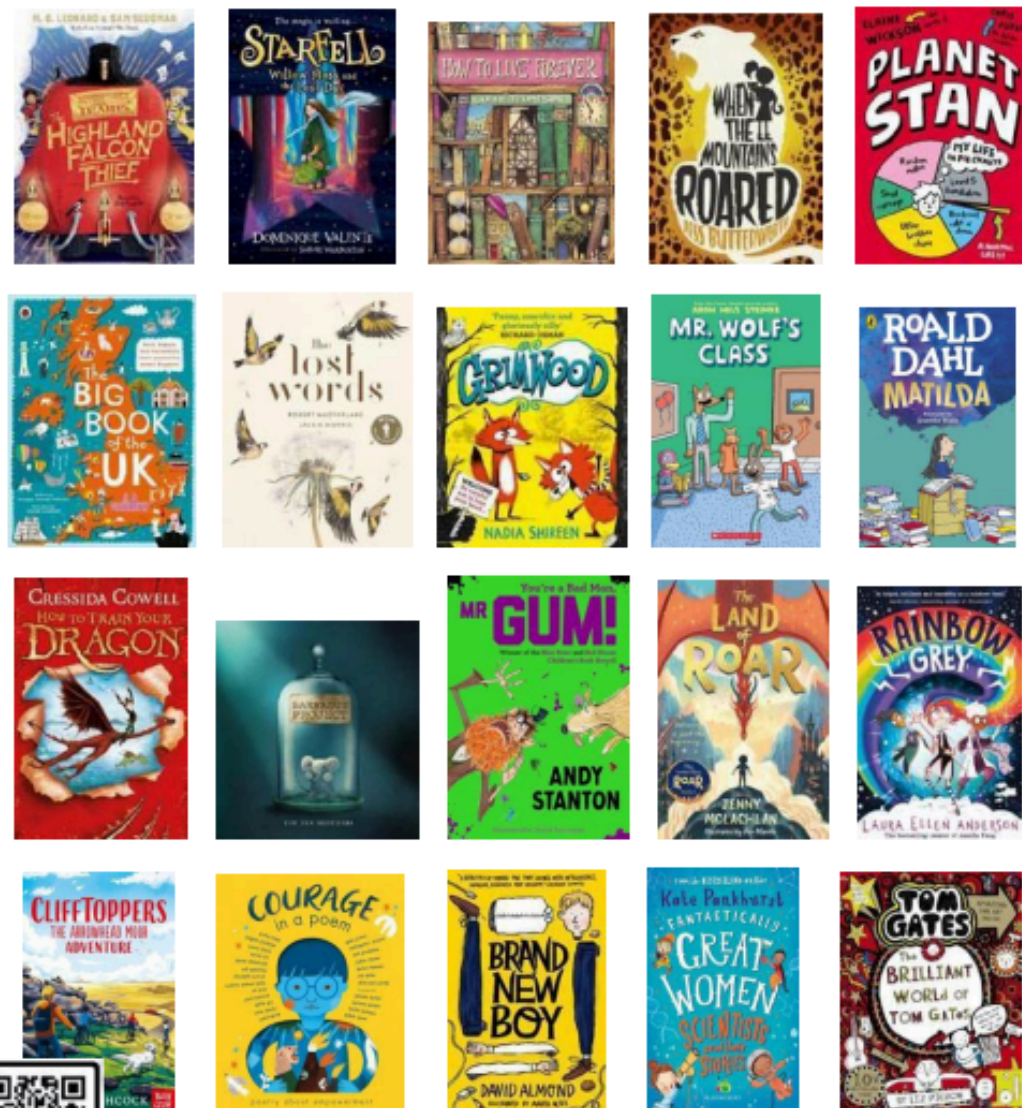
Spring Term 2
Summer Term 1 & 2



50 Recommended Reads for...

Year 4

(ages 8-9)



Reading At Kells Lane

We encourage you to read
as much as possible with
your child.

We will read to your child
every day at school, to
develop your child's
comprehension & develop a
love of reading.

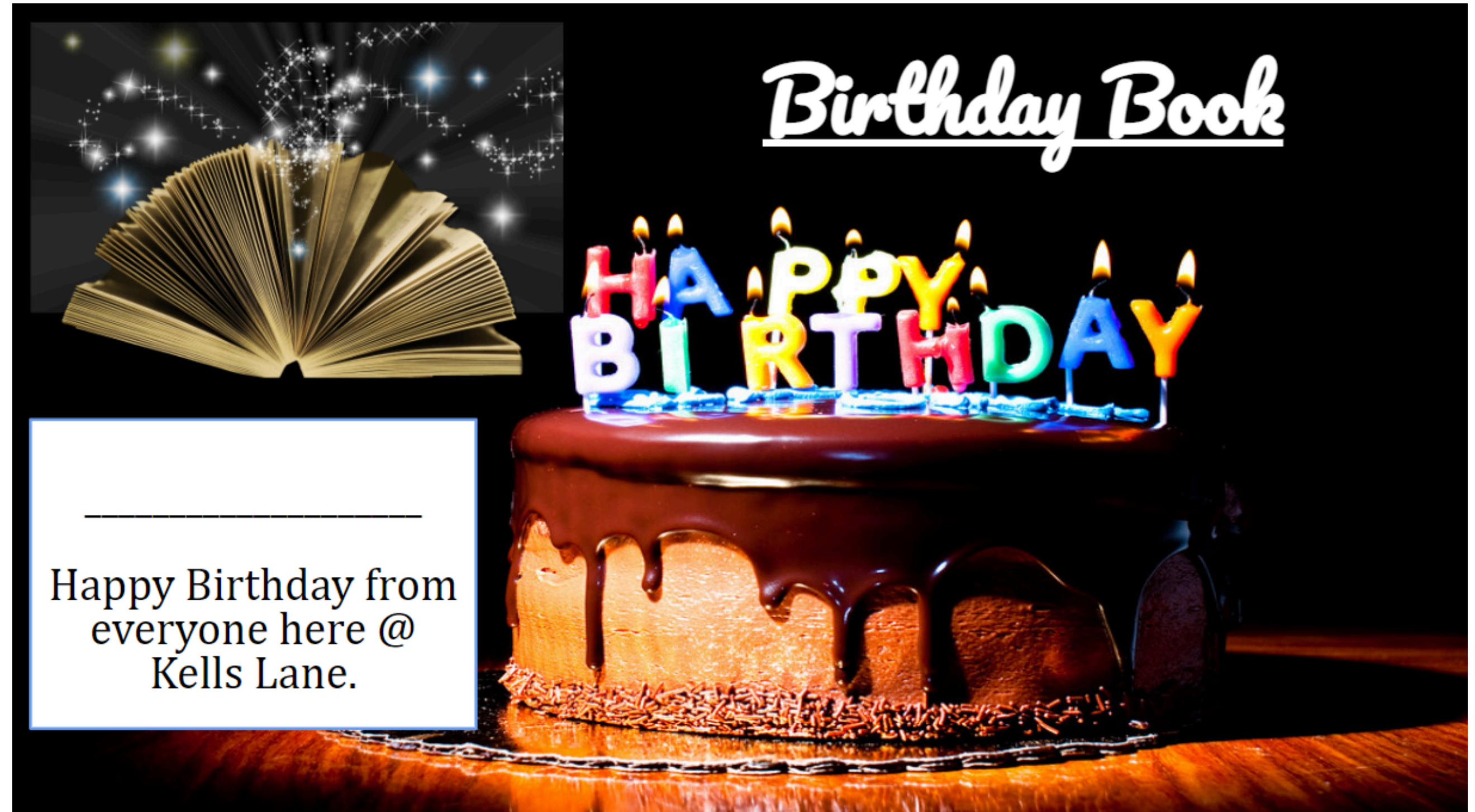
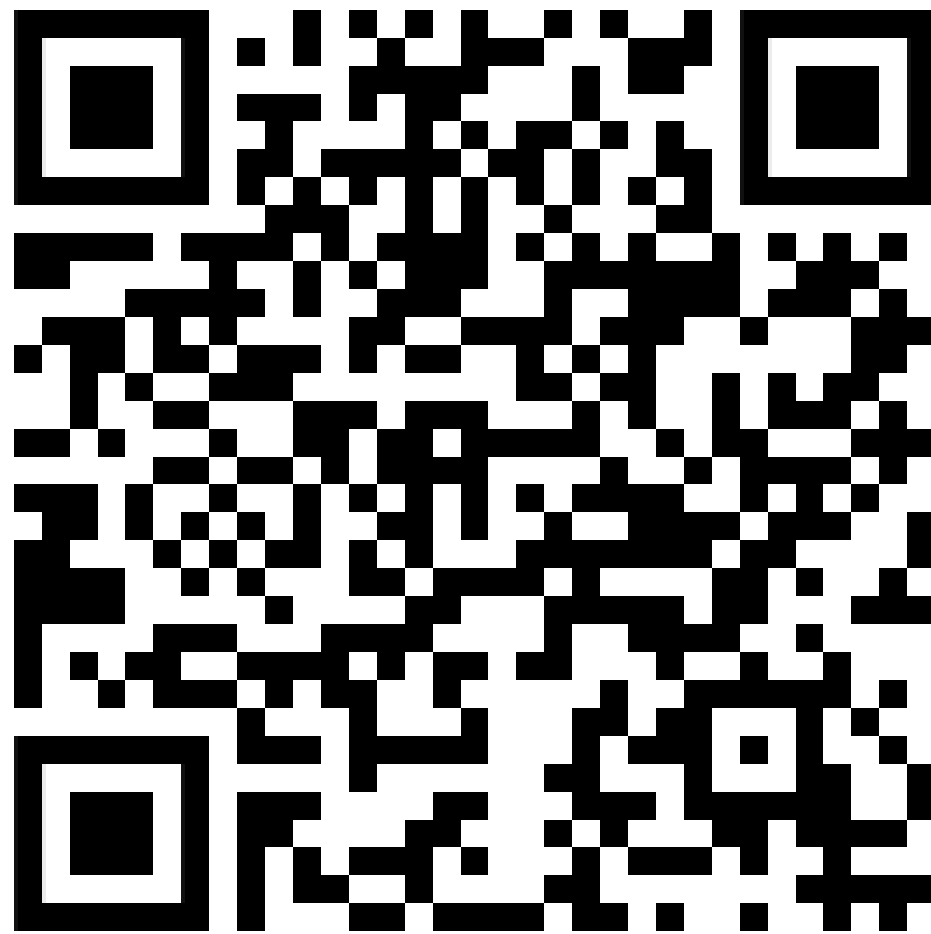


SCAN ME

www.booksfortopics.com/year-4

For more primary school booklists, visit booksfortopics.com

Love
READING



HOME LEARNING

Your child has logins for the following:

Spelling
Shed



Letter-join 



duolingo



Ask your child to read at home at least 3 times per week.

Class Page- How to help at home



Please look at the class page of our school website to find more.



How to help at home

Learn times tables

Your child will be participating in the multiplication tables check in June 2026.

It is an on-screen check consisting of 25 times table questions.

The purpose of the check is to determine whether your child can fluently recall their times tables up to 12

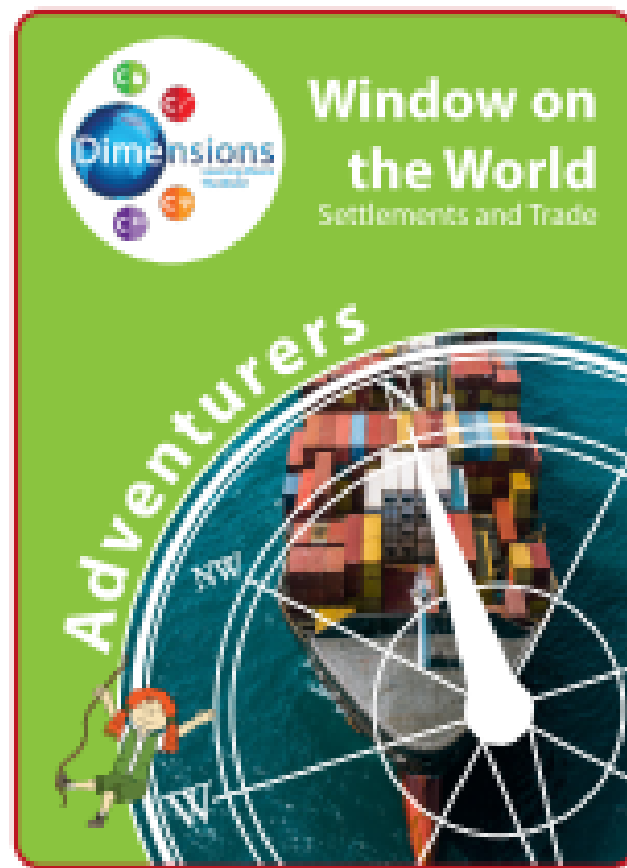


Standards
& Testing
Agency

Curriculum - Helping at Home

We will send WhISK sheets via email for each theme throughout the year.

Please concentrate on the vocabulary section with your child.



Overview

"Window on the World" is a thematic unit, based on global issues, with a key focus on geography. We begin by looking at settlements and land use, before moving on to learning about trade links. In particular, the Suez Canal as an important international trade route will be a focus. We will also learn more about extinction and endangered species, linked to captive breeding programmes.

Captive breeding

Container

Endangered

Extinct

Export

Freight

Import

Resource

Settlement

Suez Canal

Trade

Transportation

PE Kit / School Teams

Your child should come to school in their PE kit on their PE day.

- Coloured PE t-shirt/hoodie for school teams (with or without school logo)
- Black PE shorts (no logo)
- Plain black track suit or plain black joggers and black sweatshirt for outdoor use
- Trainers or plimsolls for outdoor use



Lost Property

Each year group has their own lost property tub.

Please name every item of clothing (full name rather than initials) for items to be returned.



School 'Shack'

We believe it's important for children to develop their own understanding of money. There is an option to bring in 50p for our school Shack, where your child can buy cereal bars and fruit at break time.



Nut-Free School



Please can we ask that you have no nut products in the lunch boxes or brought into the school as treats.

Free School Meals

If you receive benefits, there is additional funding available for school to provide the best environment for your child.

£1480 per child annually

www.gateshead.gov.uk/article/7433/Free-school-meals

- Income Support
- Income Based Job Seekers Allowance
- Guarantee Pension Credit
- Income Related Employment and Support Allowance (ESA Income Related)
- Child Tax Credit - but not Working Tax Credit - and your income for Tax Credit purposes less than £16,190.00
- Working Tax Credit Run-on
- Universal Credit - with a net earned family income of less than £7,400



Please scan or ask at the main office for more info

Drop Off and Pick Up

8.45am - 9.00am 3.30pm

First Day Of School

Wednesday 3rd September

Communication



Newsletter

DIARY DATES

Any changes/updates will be highlighted in green

Summer Term	
Friday 24 th May	Occasional Day - School Closed
Monday 3 rd June	Half term (Monday 27 th - Friday 31 st May)
Tuesday 4 th June	First day of term for pupils
Wednesday 5 th June	New Nursery Parents Meeting @ 9pm - Children starting in September 2024
Wednesday 5 th June	New Reception parents meeting @ 9pm
Wednesday 5 th June	Children starting in September 2024
Friday 7 th June	World Environment Day - All children invited to wear something green. All donations to go towards our eco-school projects.
Friday 7 th June	Non-uniform day
W/c Monday 10 th June	Please support our summer fair by sending in a donation with your child
Friday 14 th June	Y1 phonics screening check (and for Y2 pupils who did not pass in Y1)
Monday 17 th June - Thursday 20 th June	Sports Day @ Dryden
Monday 17 th June - Wednesday 19 th June	Y3-Y6 - Morning
Monday 24 th June	Reception, Y1 & Y2 - afternoon
Friday 28 th June	Y6 London residential
W/c Monday 1 st July	Y4 Robinwood residential
W/c Monday 1 st July	Y5 Waste & Recycling Education Centre
Friday 5 th July	Y6 recording 'Memories and Moving on' video for end of year in school
Monday 8 th July	Summer Fair - Time TBC
Monday 15 th July	Y6 - Secondary School Transition Week (dates TBC from individual schools)
Monday 15 th July	Whole school transition week - change of date to coincide with secondary school transitions
Monday 15 th July	Parents to meet new class teachers @ 2.45pm to follow (change of date to coincide with secondary transition)
Monday 15 th July	Y2 & Y3 after school 7.30pm
Monday 15 th July	Y4 & Y5 after school 7.30pm
Monday 15 th July	Y6 End of Year production @ 2.45pm
Monday 15 th July	Y6 End of Year production @ 5pm - at The Little Theatre Gateshead. Ticket information to follow.
Monday 15 th July	Y6 Leavers Presentation
Monday 15 th July	End of Year Reports to be sent home this week
Monday 15 th July	Y3, Y4, Y5 & Y6 Beach Day (visit to the beach) - further info to follow
Monday 15 th July	Last day of term - pupils in school
Summer holidays	
Monday 2 nd September	Inset day - no children in school
Tuesday 3 rd September	Inset day - no children in school
Wednesday 4 th September	First day of term for children

KELLS LANE WEEKLY UPDATE

FRIDAY 7TH JUNE 2024

Dear Parents and Carers,

Following the work we have completed across school linked to water safety, we are delighted to tell you that we have been awarded the gold Water Smart Schools Award. Water safety is now part of our school curriculum and we will continue to educate children on the importance of staying safe in and around water.

Just a reminder of our transition meeting for parents next month on Friday 5th July. Parents are invited into school at 2.45pm (one adult per child please due to classroom space) to meet your child's new teacher, find out more information about the upcoming new year and ask any questions you may have.

Please also see our diary dates section for a date change for the Y6 production. This was at the theatres request as they needed to make a last minute change to the booking. Tickets and further information will be sent out next week.

Have a lovely weekend,
Mrs R Swinbank

Find your Remarkable

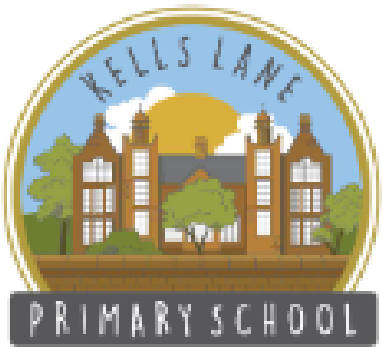


Communication



Class Pages

[School Info](#) [Parents](#) [Children](#) [Curriculum](#)



[Policies](#) [Class Pages](#) [News](#) [Contact Us](#)

Y4 Welcome Information

[Y4 WELCOME INFORMATION](#)

[Y4 ENDPOINTS](#)

[PUPIL TECHNOLOGY USAGE AGREEMENT](#)



These slides will be uploaded here
on our website

KS1 HALL

SUPPORT
READING

SCHOLASTIC

TRAVELLING BOOKS

COME TO
the BOOK FAIR!

AND EARN FREE BOOKS FOR OUR SCHOOL!

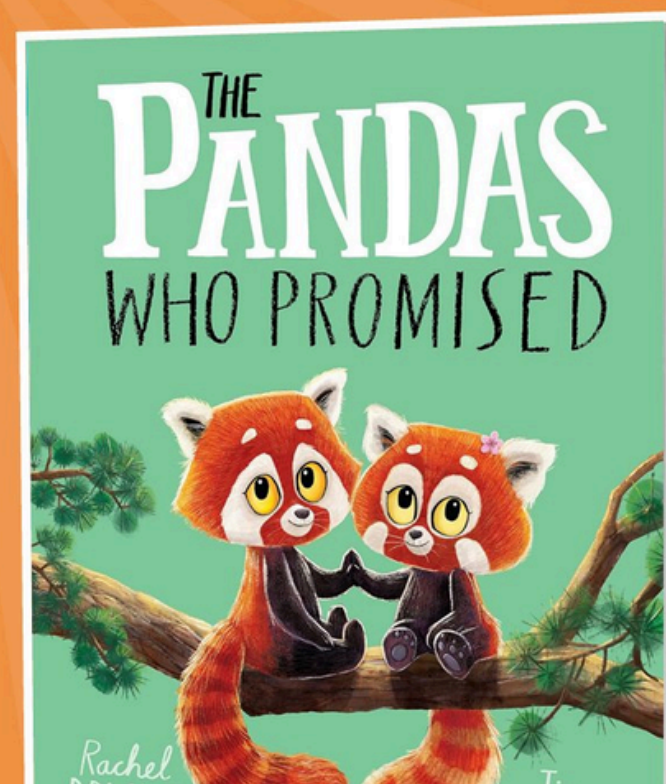
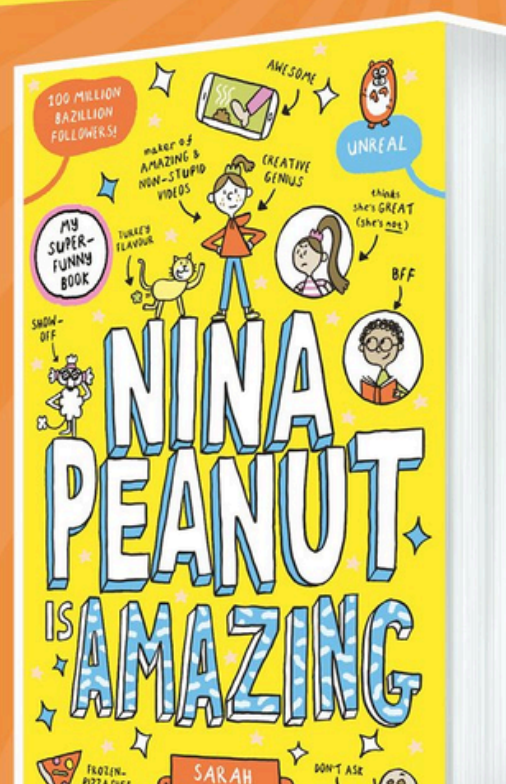
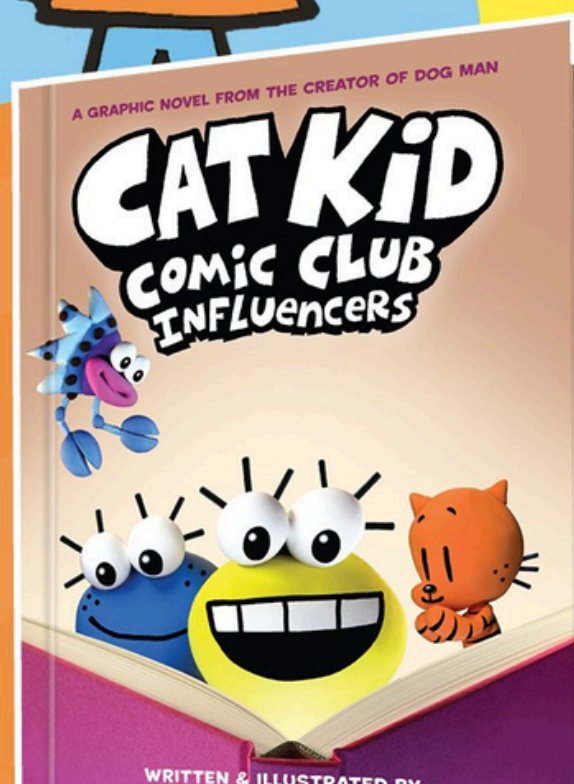
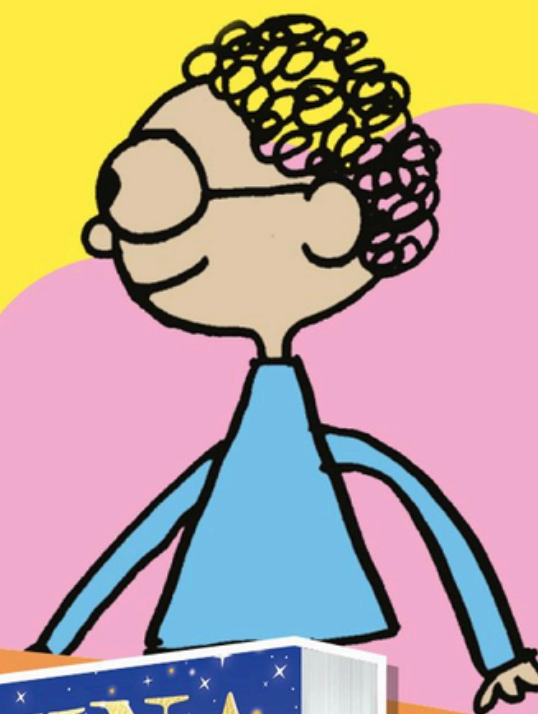


Illustration from Nina Peanut
is Amazing © Sarah Bowie, 2024.

